

TestKingfree



Pass Your Next Certification Exam Fast!

Everything you need to prepare, learn & pass your certification exam easily.
365 days free updates. First attempt guaranteed success.

Select a vendor... Select an test... Your email address [Free Download Demo](#)

We're not the only ones **excited** about TestKingFree Practice Material ...

49625+ customers in 100+ countries use TestKingFree Test Engine. [Meet our customers.](#)

V VOREED

GetCustom

JET ORANGE

iCompany

Paradoxx

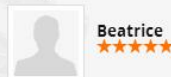
iMessenger

What Client's Say

“ Passed yesterday. Very good valid 300-101 dumps. Only 3-4 questions are new. Most questions and answers are valid. But be careful several answers are incorrect. Study hard. ”



“ I got 90%. This dumps contains redunant questions and few errors, but defintily enough to pass. :)Prepare well and study much more.Still valid. ”



<http://www.testkingfree.com/>

Pass For sure Certification Exam Guide and Exam Dumps - TestKingFree

Exam : **H13-531**

Title : **HCIE-Cloud Computing
(Written)**

Vendor : **Huawei**

Version : **DEMO**

NO.1 In Huawei desktop cloud solution, which of the following descriptions about the correspondence between desktop groups and virtual machines is correct? (Multiple Choice)

- A.** "Complete Copy" virtual machine group corresponds to "Proprietary" desktop group, proprietary includes "Static Multi-User" and "Single User"
- B.** The "Linked Clone" virtual machine group uses the "Dynamic Pool" desktop group. When the user logs in for the first time, the desktop group randomly assigns a virtual machine to bind to the user.
- C.** The "Linked Clone" virtual machine group uses the "Static Pool" desktop group. When the user logs in for the first time, the desktop group randomly assigns a virtual machine to bind to the user.
- D.** "Linked Clone" virtual machine corresponds to "Proprietary" desktop group, proprietary includes "Static Multi-User" and "Single User"

Answer: A,C

NO.2 When the FusionSphere OpenStack OM creates specifications, if virtual machine large page memory is set, NUMA affinity is enabled by default.

- A.** TRUE
- B.** FALSE

Answer: A

NO.3 In the FusionSphere server virtualization scenario, if the HA function is configured, which of the following requirements for the network are correct?

- A.** All hosts are connected to the same physical switch
- B.** Hosts in the cluster are connected to the same physical switch
- C.** All hosts are associated with the same DVS
- D.** Hosts in the cluster are associated with the same DVS

Answer: D

NO.4 Huawei ManageOne OperationCenter synchronizes alarm data from the lower level management system through Https and SNMP Trap. The former ensures that alarms can be discovered in time, while the latter guarantees that alarms will not be lost.

- A.** FALSE
- B.** TRUE

Answer: A

NO.5 Which of the following objects can be backed up by Huawei BCManager eBackup? (Multiple choice)

- A.** LUNs in the protected environment
- B.** Host disk in a protected environment
- C.** Virtual machines in a protected environment
- D.** Virtual machine disk in a protected environment

Answer: A,C,D

NO.6 The VNC login window of the cloud host on ManageOne ServiceCenter cannot be popped up. Which of the following are possible reasons? (Multiple choice)

- A.** Log in to the cloud host using VNC on the FusionCompute interface.

- B. java security level setting is error
- C. The browser's document mode setting is incorrect.
- D. The browser version is too low

Answer: B,C,D

NO.7 Regarding the description of the physical network of FusionSphere OpenStack, which of the following is incorrect?

- A. The physical network defines the mapping between the virtual network and the physical network port of the host.
- B. Virtual machines on different physical hosts can communicate with each other through the same physical network.
- C. The physical network is mapped to the physical network port or the bound physical network port on the host.
- D. Virtual machines can directly use the physical network

Answer: D

NO.8 In the FusionSphere solution, which of the following is incorrect about the description of the data store?

- A. Raw device mapping is a physical LUN that stores SANs, is allocated to multiple virtual machines through UVP, and supports all operating systems.
- B. Virtualized data storage can improve resource utilization of storage and security and reliability of system.
- C. Non-virtualized data storage creates disks faster and performs better than virtualized storage.
- D. Storage mounted in raw device mapping can only create disks of the same capacity as data storage and does not support the advanced features of virtualized storage.

Answer: A

NO.9 Deploying 100 Huawei desktop cloud VMs of the same size but different types, which of the following situations requires the most host memory?

- A. Full memory desktop
- B. Linked clone desktop
- C. Linked clone desktop + iCache
- D. Completely copy the desktop

Answer: A

NO.10 In the FusionSphere private cloud solution, a host is abnormally powered off and the mongod service is abnormal. At this point, you can restart mongod by clearing the mongod ERROR node data, and automatically synchronize the data to complete the recovery.

- A. False
- B. True

Answer: B

NO.11 Company A plans to deploy a large number of linked clone desktops and use one OceanStor 5500 as the back-end storage. Which disk scheme is more suitable?

- A. 100 1TB SAS hard disks form a storage pool with internal RAID6 type
- B. 100 1TB SAS hard disks form a storage pool with internal RAID5 type
- C. 50 2TB SATA hard disks form a storage pool with internal RAID6 type
- D. 50 2TB SATA hard disks form a storage pool with internal RAID5 type

Answer: B

NO.12 The alarm is displayed on the FusionStorage Block: "The storage pool is faulty and data is inaccessible in the storage pool." Which of the following are possible reasons? (Multiple choice)

- A. Hard disk space is not enough
- B. Storage network is abnormal
- C. Multiple hard disk failures in the storage pool in a short time
- D. The hard disk or Cache of the last copy of the three copies of the data is unreadable.

Answer: B,C